



# laminarmedica

insulated  
shipping  
systems

A total solution  
to the problem  
of shipping  
temperature  
sensitive products  
worldwide



**MEDISORB®  
PHASE  
CHANGE  
MATERIAL**  
For temperate chain distribution

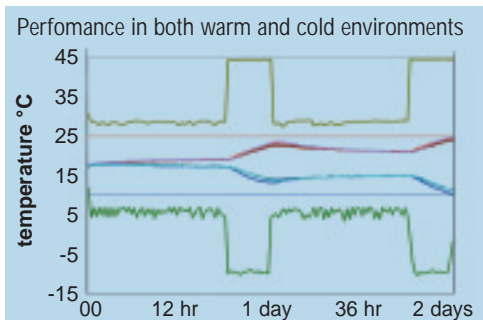


# MEDISORB®

Laminar Medica specialises in the design, test, manufacture and validation of insulated shipping systems used by the pharmaceutical and biotech industries globally. These systems protect vaccines, drugs, blood and associated medical products from the extremes of temperature during transportation.

To herald the launch of our MediSorb®2024 PCM's we have validated a range of three shipping systems designated the MediSorb®2024 (4.4 Ltr), the MediSorb®2024 (20.8 Ltr) and the MediSorb®2024 (43.2 Ltr).

This is just a starter range of a small, medium and large system to demonstrate the scalability of the solution. We are able to validate shipping systems of any size using the MediSorb®2024 PCM material. Please contact our Sales Department for more information.



## Laminar Medica Limited

A CliniMed™ Group Company

Unit 4 Tring Industrial Estate  
Icknield Way  
Tring  
Hertfordshire HP23 4JX UK

Tel +44 (0)1442 828664  
Fax +44 (0)1442 827056

enquiries@laminarmedica.co.uk  
www.laminarmedica.co.uk



### MediSorb® specifications

#### MediSorb®2024 (4.4Ltr)

Insulated Container: Meditherm 4.0  
Outside Dims: 450 x 400 x 330mm  
Payload Space: 240 x 185 x 100mm (4.4Ltr)  
Qty PCM packs: 6 x 2.0Kg packs  
System Weight: 13.1Kg

#### MediSorb®2024 (20.8Ltr)

Insulated Container: Meditherm 9.6  
Outside Dims: 575 x 525 x 555mm  
(incl. Pallet Feet)  
Payload Space: 355 x 280 x 210mm (20.8Ltr)  
Qty PCM packs: 4 x 5.0Kg + 2 x 2.5Kg  
System Weight: 29.6Kg

#### MediSorb®2024 (43.2Ltr)

Insulated Container: Meditherm 9.1  
Outside Dims: 575 x 525 x 835mm  
(incl. Pallet Feet)  
Payload Space: 355 x 280 x 435mm (43.2Ltr)  
Qty PCM packs: 8 x 5.0Kg  
System Weight: 46.2Kg



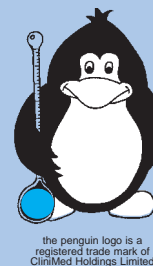
The larger sizes of MediSorb®2024 shippers are fitted with strong handles and have built-in pallet slots to facilitate handling.

# SOLVING THE PROBLEM OF TEMPERATE CHAIN DISTRIBUTION

Due to vastly increased global traffic in infectious substances, diagnostic specimens, cell cultures, controlled temperature pharmaceuticals and blood products, the temperate chain distribution activity has expanded significantly in recent years. In order to meet market demands, we have developed a range of phase change materials (PCM's) that can be used in shipments to maintain product temperatures at 15-25°C, 15-30°C or 20-24°C. Designated MediSorb®2024, the PCM packs are manufactured in-house by Laminar Medica according to ISO9001:2000 Quality Management System.

These salt based PCM's are designed for shipping products that need to be kept at "warm" or "ambient" temperatures during transportation, sometimes referred to as 'Temperate Chain Distribution.' The material within the PCM is safe and non-toxic and acts as a "buffer" with both resistance to higher and lower ambient temperatures. This is extremely useful since it is often difficult to predict whether the temperature outside the container will be warmer or cooler than the product being shipped.

Prior to shipping, the PCM packs require only a single temperature storage instruction to prepare them for use, for example for 15-25°C shipments - store at 22°C (+/-2°C) for 72 hours. The packs are then ready for use in cold and/or warm temperature climates.



ISO9001:2000  
FM 28012